

LSM 510 META

Laser Scanning Microscope

Selected References on Spectral Imaging and Emission Fingerprinting



Contents

Cell Biology	
Cell Signalling	4
Cytoskeleton	5
Vesicular Trafficking	6
<hr/>	
Development Biology	
Stem Cell Research	6
<hr/>	
Cancer Biology	
Immunology	7
<hr/>	
Neurobiology	8
<hr/>	
Plant Biology	9
<hr/>	
Physiology	
Ion Imaging	10
<hr/>	
Host-Pathogen Interactions	10
<hr/>	
Technology	
Methodology	11
<hr/>	
FRET	
by Emission Fingerprinting	12
<hr/>	
LSM 5 Family	14
<hr/>	
Courses	15
<hr/>	

LSM 510 META

Selected References on Spectral Imaging and Emission Fingerprinting

This compilation lists selected scientific publications describing the use of the award winning LSM 510 META for confocal spectral imaging. These publications describe in particular

- the recording and analysis of spectral signatures of fluorescent compounds

as well as the use of the Emission Fingerprinting approach

- to separate multiple fluorescence signals with spectrally overlapping emissions
- to isolate and eliminate cell and tissue autofluorescence
- to monitor protein-protein interactions and ion dynamics via Fluorescence Resonance Energy Transfer (FRET).

Please note that some references may appear in more than one section depending on their content.



Cell Signalling

Barda-Saad M., Braiman A., Titerance R., Bunnell S.C., Barr V.A., Samuelson L.E.

Dynamic molecular interactions linking T cell antigen receptor to the actin cytoskeleton.
Nat. Immunol., 6, 80–89 (2004)

Bivona T.G., Wiener H.H., Ahearn I.M., Silletti J., Chiu V.K., Philips M.R.

Rap1 up-regulation and activation on plasma membrane regulates T cell adhesion.
J. Cell Biol., 164, 461–470 (2004)

Connor K.M., Subbaram S., Regan K.J., Nelson K.K., Mazurkiewicz J.E., Bartholomew P.J., Aplin A.E., Tai Y.T., Aguirre-Ghiso J., Flores S.C., Melendez J.A.

Mitochondrial H₂O₂ Regulates the Angiogenic Phenotype via PTEN Oxidation.
J. Biol. Chem., 280, 16916–16924 (2005)

Dale L.B., Seachrist J.L., Babwah A.V., Ferguson S.S.G.

Regulation of Angiotensin II Type 1A Receptor Intracellular Retention, Degradation, and Recycling by Rab5, Rab7, and Rab11 GTPases.
J. Biol. Chem., 279, 13110–13118 (2004)

Faure M., Barber D.F., Takahashi S.M., Jin T., Long E.O.

Spontaneous Clustering and Tyrosine Phosphorylation of NK Cell Inhibitory Receptor Induced by Ligand Binding.
J. Immunol., 170, 6107–6114 (2005)

Gladychева S.E., Ho C.S., Lee Y.Y.F., Stuenkel E.L.

Regulation of syntaxin1A-munc18 complex for SNARE pairing in HEK293 cells.
J. Physiol., 558, 857–871 (2004)

Hellwig N., Plant T.D., Janson W., Schäfer M., Schultz G., Schaefer M.

TRPV1 Acts as Proton Channel to Induce Acidification in Nociceptive Neurons.
J. Biol. Chem., 279, 34553–34561 (2004)

Hofmann S.R., Lam A.Q., Frank S., Zhou Y.J., Ramos H.L., Kanno Y., Agnello D., Youle R.J., O'Shea J.J.

Jak3-Independent Trafficking of the Common γ Chain Receptor Subunit: Chaperone Function of Jaks Revisited.
Mol. Biol. Cell, 24, 5039–5049 (2004)

Kawai H., Suzuki T., Kobayashi T., Sakurai H., Ohata H., Honda K., Momose K., Namekata I., Tanaka H., Shigenobu K., Nakamura R., Hayakawa T., Kawanishi T.

Simultaneous real-time detection of initiator- and effector-caspase activation by double fluorescence resonance energy transfer analysis.
J. Pharm. Sci., 97, 361–368 (2005)

Koch H.P., Larsson H.P.

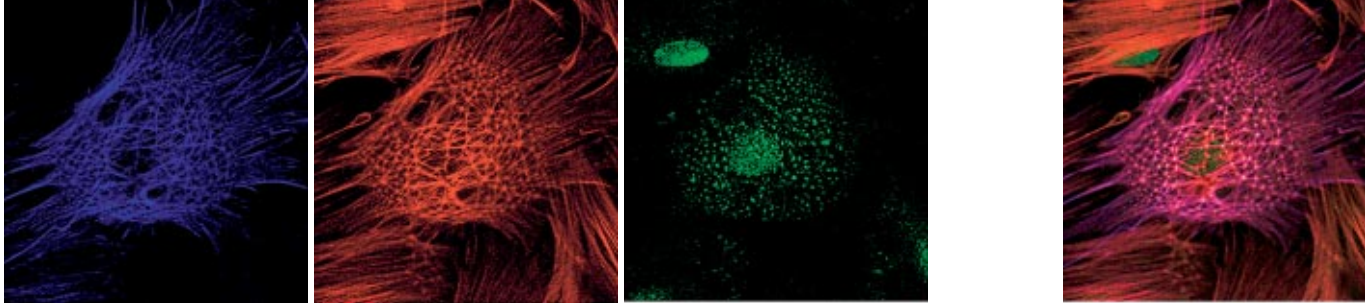
Small-Scale Molecular Motions Accomplish Glutamate Uptake in Human Glutamate Transporters.
J. Neurosci., 25, 1730–1736 (2005)

Liu J., Ernst S.A., Gladychева S.E., Lee Y.Y., Lentz S.I., Ho C.S., Li Q., Stuenkel E.L.

Fluorescence Resonance Energy Transfer Reports Properties of Syntaxin1A Interaction with Munc18-1 in Vivo.
J. Biol. Chem., 279, 55924–55936 (2004)

Nashmi R., Dickinson M.E., McKinney S., Jareb M., Labarca, Fraser S.E., Lester H.E.

Assembly of $\alpha 4\beta 2$ Nicotinic Acetylcholine Receptors Assessed with Functional Fluorescently Labeled Subunits: Effects of Localization, Trafficking, and Nicotine-Induced Upregulation in Clonal Mammalian Cells and in Cultured Midbrain Neurons.
J. Neurosci., 23, 11554–11567 (2003)



Nishi M., Tanaka M., Matsuda K., Sunaguchi M., Kawata M.

Visualization of glucocorticoid receptor and mineralocorticoid receptor interactions in living cells with GFP-based fluorescence resonance energy transfer. *J. Neurosci.*, 24, 4918–4927 (2004)

Rey O., Young S.H., Yuan J., Slice L., Rozengurt E.

Amino Acid-stimulated Ca^{2+} Oscillations Produced by the Ca^{2+} -sensing Receptor Are Mediated by a Phospholipase C/Inositol 1,4,5-Trisphosphate-independent Pathway That Requires G_{12} , Rho, Filamin-A, and the Actin Cytoskeleton. *J. Bio. Chem.*, 760, 22875–22882 (2005)

Rocheleau J.V., Head W.S., and Piston D.W.

Quantitative NAD(P)H/Flavoprotein Autofluorescence Imaging Reveals Metabolic Mechanisms of Pancreatic Islet Pyruvate Response. *J. Biol. Chem.*, 279, 31780–31787 (2004)

Shimi T., Koujin T., Segura-Totten M., Wilson K.L., Haraguchi T., Hiraoka Y.

Dynamic interaction between BAF and emerin revealed by FRAP, FLIP, and FRET analyses in living HeLa cells. *J. Struct. Biol.*, 147, 31–41 (2004)

Vasko V., Saji M., Hardy E., Kruhlak M., Larin A., Savchenko V., Miyakawa M., Isozaki O., Murakami H., Tsushima T., Burman K.D., De Micco C., Ringel M.D.

Akt activation and localisation correlate with tumour invasion and oncogene expression in thyroid cancer. *J. Med. Genet.*, 41, 161–170 (2004)

Wüller S., Wiesner B., Löffler A., Furkert J., Krause G., Hermosilla R., Schaefer M., Schulein R., Rosenthal W., Oksche A.

Pharmacochaperones post-translationally enhance cell surface expression by increasing conformational stability of wild-type and mutant vasopressin V2 receptors. *J. Biol. Chem.*, 279, 47254–47263 (2004)

Xu X., Meier-Schellersheim M., Jiao X., Nelson L.E., Jin T.

Quantitative Imaging of Single Live Cells Reveals Spatiotemporal Dynamics of Multistep Signaling Events of Chemoattractant Gradient Sensing in *Dictyostelium*. *Mol. Biol. Cell*, 16, 676–688 (2005)

Cytoskeleton

Barda-Saad M., Braiman A., Titerance R., Bunnell S.C., Barr V.A., Samuelson L.E.

Dynamic molecular interactions linking T cell antigen receptor to the actin cytoskeleton. *Nat. Immunol.*, 6, 80–89 (2004)

Brandizzi F., Snapp E.L., Roberts A.G., Lippincott-Schwartz J., Hawes C.

Membrane Protein Transport between the Endoplasmic Reticulum and the Golgi in Tobacco Leaves Is Energy Dependent but Cytoskeleton Independent: Evidence from Selective Photobleaching. *Plant Cell*, 14, 1293–1309 (2002)



Fig.: Rat podocyte after Emission Fingerprinting Anti-smooth muscle actin/FITC (blue), Rhodamine-Phalloidin (red), Anti-actinin-4/Alexa594 (green). Sample: Dr. H. Kurihara, Jutendo University, Tokyo, Japan

→ **Vesicular Trafficking**

Bivona T.G., Wiener H.H., Ahearn I.M., Silletti J., Chiu V.K., Philips M.R.

Rap1 up-regulation and activation on plasma membrane regulates T cell adhesion.
J. Cell Biol., 164, 461–470 (2004)

Brandizzi F., Snapp E.L., Roberts A.G., Lippincott-Schwartz J., Hawes C.

Membrane Protein Transport between the Endoplasmic Reticulum and the Golgi in Tobacco Leaves Is Energy Dependent but Cytoskeleton Independent: Evidence from Selective Photobleaching.
Plant Cell, 14, 1293–1309 (2002)

Dale L.B., Seachrist J.L., Babwah A.V., Ferguson S.S.G.

Regulation of Angiotensin II Type 1A Receptor Intracellular Retention, Degradation, and Recycling by Rab5, Rab7, and Rab11 GTPases.
J. Biol. Chem., 279, 13110–13118 (2004)

daSilva L.L.P., Snapp E.L., Denecke J., Lippincott-Schwartz J., Hawes C., Brandizzi F.

Endoplasmic Reticulum Export Sites and Golgi Bodies Behave as Single Mobile Secretory Units in Plant Cells.
Plant Cell, 16, 1753–1771 (2004)

Proulx C.D., Simaan M., Escher E., Laporte S.A., Guillemette G., Leduc R.

Involvement of a cytoplasmic-tail serine cluster in urotensin II receptor internalization.
Biochem J., 385, 115–123 (2005)

Renna L., Hanton S.L., Stefano G., Bortolotti L., Misra V., Brandizzi F.

Identification and characterization of AtCASP, a plant transmembrane Golgi matrix protein.
Plant Mol. Biol., 58, 109–122 (2005)

Bak M., Fraser S.E.

Axon fasciculation and differences in midline kinetics between pioneer and follower axons within commissural fascicles.
Development, 130, 4999–5008 (2003)

Gros J., Manceau M., Thomé V., Marcelle C.

A common somitic origin for embryonic muscle progenitors and satellite cells.
Nature, 435, 954–958 (2005)

Hattan N., Kawaguchi H., Ando K., Kuwabara E., Fujita J., Murata M., Suematsu M., Mori H., Fukuda K.

Purified cardiomyocytes from bone marrow mesenchymal stem cells produce stable intracardiac grafts in mice.
Cardiovasc. Res., 65, 334–344 (2005)

Jackson K.A., Snyder D.S., Goodell M.A.

Skeletal muscle fiber-specific green autofluorescence: Potential for stem cell engrafting artifacts.
Stem Cells, 22, 180–187 (2004)

Li W., Ono F., Brehm P.

Optical Measurements of Presynaptic Release in Mutant Zebrafish Lacking Postsynaptic Receptors.
J. Neurosci., 23, 10467–10474 (2003)

Cancer Biology Immunology

**Barda-Saad M., Braiman A., Titerance R.,
Bunnell S.C., Barr V.A., Samuelson L.E.**

Dynamic molecular interactions linking T cell antigen receptor to the actin cytoskeleton.
Nat. Immunol., 6, 80–89 (2004)

**Chan P., Yuen T., Ruf F., Gonzalez-Maeso J.,
Sealfon S.C.**

Method for multiplex cellular detection of mRNAs using quantum dot fluorescent *in situ* hybridization.
Nucleic Acids Res., 33, e161 (2005)

**Chretien F., Dreyfus P.A., Christov C., Caramelle P.,
Lagrange J.-L., Chazaud B., Gherardi R.K.**

In Vivo Fusion of Circulating Fluorescent Cells with Dystrophin-Deficient Myofibers Results in Extensive Sarcoplasmic Fluorescence Expression but Limited Dystrophin Sarcolemmal Expression.
Am. J. Pathol., 166, 1741–1748 (2005)

**Connor K.M., Subbaram S., Regan K.J.,
Nelson K.K., Mazurkiewicz J.E.,
Bartholomew P.J., Aplin A.E., Tai Y.T.,
Aguirre-Ghiso J., Flores S.C., Melendez J.A.**

Mitochondrial H₂O₂ Regulates the Angiogenic Phenotype via PTEN Oxidation.
J. Biol. Chem., 280, 16916–16924 (2005)

**Kim C.S., Vasko V.V., Kato Y., Kruhlak M.,
Saji M., Cheng S.-Y., Ringel M.D.**

AKT activation promotes metastasis in a mouse model of follicular thyroid carcinoma.
Endocrinol., 146, 4456–4463 (2005)

**Tanabe H., Küpper K., Ishida T., Neusser M.,
Mizusawa H.**

Inter- and intra-specific gene-density-correlated radial chromosome territory arrangements are conserved in Old World monkeys.
Cytogenet Genome Res., 108, 255–261 (2005)

**Vasko V., Saji M., Hardy E., Kruhlak M.,
Larin A., Savchenko V., Miyakawa M.,
Isozaki O., Murakami H., Tsushima T.,
Burman K.D., De Micco C., Ringel M.D.**

Akt activation and localisation correlate with tumour invasion and oncogene expression in thyroid cancer.
J. Med. Genet., 41, 161–170 (2004)

Voura E.B., Jaiswal J.K., Mattoussi H., Simon S.M.

Tracking metastatic tumor cell extravasation with quantum dot nanocrystals and fluorescence emission-scanning microscopy.
Nat. Med., 9, 993–998 (2004)

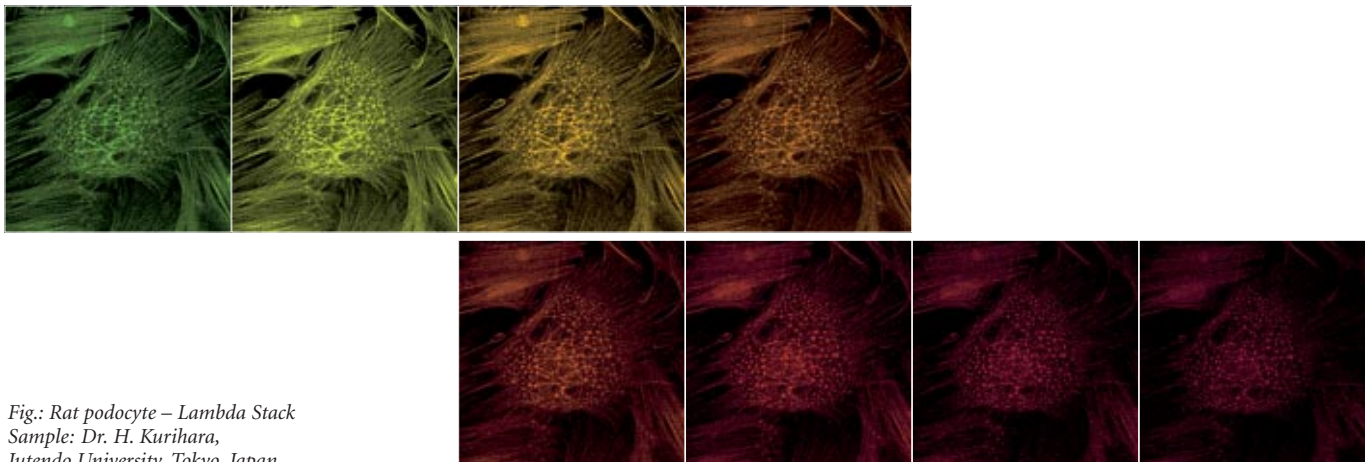


Fig.: Rat podocyte – Lambda Stack
Sample: Dr. H. Kurihara,
Jutendo University, Tokyo, Japan

Neurobiology

Bak M., Fraser S.E.

Axon fasciculation and differences in midline kinetics between pioneer and follower axons within commissural fascicles.

Development, 130, 4999–5008 (2003)

Gladychева S.E., Ho C.S., Lee Y.Y.F., Stuenkel E.L.

Regulation of syntaxin1A-munc18 complex for SNARE pairing in HEK293 cells.

J. Physiol., 558, 857-871 (2004)

Imanishi Y., Gerke V., Palczewski K.

Retinosomes: new insights into intracellular managing of hydrophobic substances in lipid bodies.

J. Cell Biol., 166, 447–453 (2004)

Khakh B.S., Fisher J.A., Nashmi R., Bowser D.N., Lester H.A.

An Angstrom Scale Interaction between Plasma Membrane ATP-Gated P2X₂ and $\alpha_4\beta_2$ Nicotinic Channels Measured with Fluorescence Resonance Energy Transfer and Total Internal Reflection Fluorescence Microscopy.

J. Neurosci., 25, 6911–6920 (2005)

Koch H.P., Larsson H.P.

Small-Scale Molecular Motions Accomplish Glutamate Uptake in Human Glutamate Transporters.

J. Neurosci., 25, 1730–1736 (2005)

Li W., Ono F., Brehm P.

Optical Measurements of Presynaptic Release in Mutant Zebrafish Lacking Postsynaptic Receptors.

J. Neurosci., 23, 10467–10474 (2003)

Liu J., Ernst S.A., Gladychева S.E., Lee Y.Y., Lentz S.I., Ho C.S., Li Q., Stuenkel E.L.

Fluorescence Resonance Energy Transfer Reports Properties of Syntaxin1A Interaction with Munc18-1 in Vivo.

J. Biol. Chem., 279, 55924–55936 (2004)

Liu Q., Zuo J., Pierce E.A.

The Retinitis Pigmentosa 1 Protein Is a Photoreceptor Microtubule-Associated Protein.

J. Neurosci., 24, 6427–6436 (2004)

Nashmi R., Dickinson M.E., McKinney S., Jareb M., Labarca, Fraser S.E., Lester H.E.

Assembly of $\alpha_4\beta_2$ Nicotinic Acetylcholine Receptors Assessed with Functional Fluorescently Labeled Subunits: Effects of Localization, Trafficking, and Nicotine-Induced Upregulation in Clonal Mammalian Cells and in Cultured Midbrain Neurons.

J. Neurosci., 23, 11554–11567 (2003)

Nishi M., Tanaka M., Matsuda K., Sunaguchi M., Kawata M.

Visualization of glucocorticoid receptor and mineralocorticoid receptor interactions in living cells with GFP-based fluorescence resonance energy transfer.

J. Neurosci., 24, 4918–4927 (2004)

Xu Q., Brecht W.J., Weisgraber K.H., Mahley R.W., Huang Y.

Apolipoprotein E4 Domain Interaction Occurs in Living Neuronal Cells as Determined by Fluorescence Resonance Energy Transfer.

An H., Roussot R., Suárez-López P., Corbesier L., Vincent C., Piñeiro M., Hepworth S., Mouradov A., Justin S., Turnbull C., Coupland G.

CONSTANS acts in the phloem to regulate a systemic signal that induces photoperiodic flowering of *Arabidopsis*.
Development, 131, 3615–3626 (2004)

Berg R.H.

Evaluation of spectral imaging for plant cell analysis.
J. Microscopy, 214, 174–181 (2004)

Bezanilla M., Pan A., Quatrano R.S.

RNA Interference in the Moss *Physcomitrella patens*.
Plant Physiol., 133, 470–474 (2003)

Bhat R.A., Miklis M., Schmelzer E., Schulze-Lefert P., Panstruga R.

Recruitment and interaction dynamics of plant penetration resistance components in a plasma membrane microdomain.
PNAS, 102, 3135–3140 (2005)

daSilva L.L.P., Snapp E.L., Denecke J., Lippincott-Schwartz J., Hawes C., Brandizzi F.

Endoplasmic Reticulum Export Sites and Golgi Bodies Behave as Single Mobile Secretory Units in Plant Cells.
Plant Cell, 16, 1753–1771 (2004)

Herrmann S., Oelmüller R., Buscot F.

Manipulation of the onset of ectomycorrhiza formation by indole-3-acetic acid, activated charcoal or relative humidity in the association between oak microcuttings and *Piloderma croceum*: influence on plant development and photosynthesis.
J. Plant Physiol., 161, 509–517 (2004)

Larson C., Passy S.I.

Spectral Fingerprinting of Algal Communities: a Novel Approach to Biofilm Analysis and Biomonitoring.
J. Phycol., 41, 439–446 (2005)

Mizoguchi T., Wright L., Fujiwara S., Cremer F., Lee K., Onouchi H., Mouradov A., Fowler S., Kamada H., Putterill J., Coupland G.

Distinct Roles of *GIGANTEA* in Promoting Flowering and Regulating Circadian Rhythms in *Arabidopsis*.
Plant Cell, 17, 2255–2270 (2005)

Renna L., Hanton S.L., Stefano G., Bortolotti L., Misra V., Brandizzi F.

Identification and characterization of AtCASP, a plant transmembrane Golgi matrix protein.
Plant Mol. Biol., 58, 109–122 (2005)

Physiology Ion Imaging

Christopher J. Chang, Jacek Jaworski†, Elizabeth M. Nolan, Morgan Shengt, and Stephen J. Lippard

A tautomeric zinc sensor for ratiometric fluorescence imaging: Application to nitric oxide-induced release of intracellular zinc.
PNAS, 101, 1129–1134 (2003)

Hiraoka Y., Shimi T., Haraguchi T.

Multispectral Imaging Fluorescence Microscopy for Living Cells.
Cell Struct. Funct., 27, 367–374 (2002)

Rey O., Young S.H., Yuan J., Slice L., Rozengurt E.

Amino Acid-stimulated Ca^{2+} Oscillations Produced by the Ca^{2+} -sensing Receptor Are Mediated by a Phospholipase C/Inositol 1,4,5-Trisphosphate-independent Pathway That Requires G_{12} , Rho, Filamin-A, and the Actin Cytoskeleton.
J. Bio. Chem., 280, 22875–22882 (2005)

Rothstein E.C., Carroll S., Combs C.A., Jobsis P.D., Balaban R.S.

Skeletal Muscle NAD(P)H Two-Photon Fluorescence Microscopy In Vivo: Topology and Optical Inner Filters.
Biophys. J., 88, 2165–2176 (2005)

Taki M., Wolford J.L., O'Halloran T.V.

Emission Ratiometric Imaging of Intracellular Zinc: Design of a Benzoxazole Fluorescent Sensor and Its Application in Two-Photon Microscopy.
J. Am. Chem. Soc., 126, 712–713 (2004)

Host-Pathogen Interactions

Bhat R.A., Miklis M., Schmelzer E., Schulze-Lefert P., Panstruga R.

Recruitment and interaction dynamics of plant penetration resistance components in a plasma membrane microdomain.
PNAS, 102, 3135–3140 (2005)

Brandizzi F., Snapp E.L., Roberts A.G., Lippincott-Schwartz J., Hawes C.

Membrane Protein Transport between the Endoplasmic Reticulum and the Golgi in Tobacco Leaves Is Energy Dependent but Cytoskeleton Independent: Evidence from Selective Photobleaching.
Plant Cell, 14, 1293–1309 (2002)

Derdowski A., Ding L., Spearman P.

A Novel Fluorescence Resonance Energy Transfer Assay Demonstrates that the Human Immunodeficiency Virus Type 1 Pr55^{Gag} I Domain Mediates Gag-Gag Interactions.
J. Virol., 78, 1230–1242 (2004)

Everett H., Barry M., Sun X., Lee S.F., Frantz C., Berthiaume L.G., McFadden G., Bleackley R.C.

The Myxoma Poxvirus Protein, M11L, Prevents Apoptosis by Direct Interaction with the Mitochondrial Permeability Transition Pore.
J. Exp. Med., 196, 1127–1139 (2005)

Technology Methodology

Chan P., Yuen T., Ruf F., Gonzalez-Maeso J., Sealfon S.C.

Method for multiplex cellular detection of mRNAs using quantum dot fluorescent *in situ* hybridization. *Nucleic Acids Res.*, 33, e161 (2005)

Dickinson M.E., Bearman G., Tille S., Lansford R., Fraser S.E.

Multi-spectral imaging and linear unmixing add a whole new dimension to laser scanning fluorescence microscopy. *Biotechniques*, 31, 1272–1278 (2001)

Dickinson M.E., Simbürger E., Zimmermann B., Waters C.W., Fraser S.E.

Multiphoton excitation spectra in biological samples. *J. Biomed. Opt.*, 8, 329–338 (2003)

Ecker R.C., de Martin R., Steiner G.E., Schmid J.A.

Application of Spectral Imaging Microscopy in Cytomics and Fluorescence Resonance Energy Transfer (FRET) Analysis. *Cytometry A*, 59A:172–181 (2004)

Ecker R.C., Steiner G.E.

Microscopy-Based Multicolor Tissue Cytometry at the Single-Cell Level. *Cytometry A*, 59A:182–190 (2004)

Galbraith J.A., Terasaki M.

Controlled Damage in Thick Specimens by Multiphoton Excitation. *Mol. Biol. Cell*, 14, 1808–1817 (2003)

Hadjantonakis A.K., Dickinson M.E., Fraser S.E., Papaioannou V.E.

Technicolour transgenics: imaging tools for functional genomics in the mouse. *Nat. Rev. Genet.*, 4, 613–625 (2003)

Hiraoka Y., Shimi T., Haraguchi T.

Multispectral Imaging Fluorescence Microscopy for Living Cells. *Cell Struct. Funct.*, 27, 367–374 (2002)

Jackson K.A., Snyder D.S., Goodell M.A.

Skeletal muscle fiber-specific green autofluorescence: Potential for stem cell engrafting artifacts. *Stem Cells*, 22, 180–187 (2004)

Kawai H., Suzuki T., Kobayashi T., Sakurai H., Ohata H., Honda K., Momose K., Namekata I., Tanaka H., Shigenobu K., Nakamura R., Hayakawa T., Kawanishi T.

Simultaneous real-time detection of initiator- and effector-caspase activation by double fluorescence resonance energy transfer analysis. *J. Pharm. Sci.*, 97, 361–368 (2005)

Lansford R., Bearman G., Fraser S.E.

Resolution of multiple green fluorescent protein color variants and dyes using two-photon microscopy and imaging spectroscopy. *J. Biomed. Opt.*, 6, 311–318 (2001)

Rothstein E.C., Carroll S., Combs C.A., Jobsis P.D., Balaban R.S.

Skeletal Muscle NAD(P)H Two-Photon Fluorescence Microscopy In Vivo: Topology and Optical Inner Filters. *Biophys. J.*, 88, 2165–2176 (2005)

Rubart M.

Two-Photon Microscopy of Cells and Tissue. *Circ. Res.*, 95, 1154–1166 (2004)

Sekar R.B., Periasamy A.

Fluorescence resonance energy transfer (FRET) microscopy imaging of live cell protein localizations. *J. Cell Biol.*, 160, 629–633 (2003)

FRET

by Emission Fingerprinting

Barda-Saad M., Braiman A., Titerance R., Bunnell S.C., Barr V.A., Samuelson L.E.

Dynamic molecular interactions linking T cell antigen receptor to the actin cytoskeleton.
Nat. Immunol., 6, 80–89 (2004)

Berg R.H.

Evaluation of spectral imaging for plant cell analysis.
J. Microscopy, 214, 174–181 (2004)

Derdowski A., Ding L., Spearman P.

A Novel Fluorescence Resonance Energy Transfer Assay Demonstrates that the Human Immunodeficiency Virus Type 1 Pr55^{Gag} I Domain Mediates Gag-Gag Interactions.
J. Virol., 78, 1230–1242 (2004)

Ecker R.C., de Martin R., Steiner G.E., Schmid J.A.

Application of Spectral Imaging Microscopy in Cytomics and Fluorescence Resonance Energy Transfer (FRET) Analysis.
Cytometry A, 59A:172–181 (2004)

Everett H., Barry M., Sun X., Lee S.F., Frantz C., Berthiaume L.G., McFadden G., Bleackley R.C.

The Myxoma Poxvirus Protein, M11L, Prevents Apoptosis by Direct Interaction with the Mitochondrial Permeability Transition Pore.
J. Exp. Med., 196, 1127–1139 (2005)

Faure M., Barber D.F., Takahashi S.M., Jin T., Long E.O.

Spontaneous Clustering and Tyrosine Phosphorylation of NK Cell Inhibitory Receptor Induced by Ligand Binding.
J. Immunol., 170, 6107–6114 (2005)

Hellwig N., Plant T.D., Janson W., Schäfer M., Schultz G., Schaefer M.

TRPV1 Acts as Proton Channel to Induce Acidification in Nociceptive Neurons.
J. Biol. Chem., 279, 34553–34561 (2004)

Hiraoka Y., Shimi T., Haraguchi T.

Multispectral Imaging Fluorescence Microscopy for Living Cells.
Cell Struct. Funct., 27, 367–374 (2002)

Kawai H., Suzuki T., Kobayashi T., Sakurai H., Ohata H., Honda K., Momose K., Namekata I., Tanaka H., Shigenobu K., Nakamura R., Hayakawa T., Kawanishi T.

Simultaneous real-time detection of initiator- and effector-caspase activation by double fluorescence resonance energy transfer analysis.
J. Pharm. Sci., 97, 361–368 (2005)

Liu J., Ernst S.A., Gladysheva S.E., Lee Y.Y., Lentz S.I., Ho C.S., Li Q., Stuenkel E.L.

Fluorescence Resonance Energy Transfer Reports Properties of Syntaxin1A Interaction with Munc18-1 in Vivo.
J. Biol. Chem., 279, 55924–55936 (2004)

Nashmi R., Dickinson M.E., McKinney S., Jareb M., Labarca, Fraser S.E., Lester H.E.

Assembly of $\alpha 4\beta 2$ Nicotinic Acetylcholine Receptors Assessed with Functional Fluorescently Labeled Subunits: Effects of Localization, Trafficking, and Nicotine-Induced Upregulation in Clonal Mammalian Cells and in Cultured Midbrain Neurons.
J. Neurosci., 23, 11554–11567 (2003)

Nishi M., Tanaka M., Matsuda K., Sunaguchi M., Kawata M.

Visualization of glucocorticoid receptor and mineralocorticoid receptor interactions in living cells with GFP-based fluorescence resonance energy transfer.
J. Neurosci., 24, 4918–4927 (2004)

Shimi T., Koujin T., Segura-Totten M., Wilson K.L., Haraguchi T., Hiraoka Y.
Dynamic interaction between BAF and emerin revealed by FRAP, FLIP, and FRET analyses in living HeLa cells. *J. Struct. Biol.*, 147, 31–41 (2004)

Wüller S., Wiesner B., Löffler A., Furkert J., Krause G., Hermosilla R., Schaefer M., Schulein R., Rosenthal W., Oksche A.
Pharmacochaperones post-translationally enhance cell surface expression by increasing conformational stability of wild-type and mutant vasopressin V2 receptors. *J. Biol. Chem.*, 279, 47254–47263 (2004)

Xu Q., Brecht W.J., Weisgraber K.H., Mahley R.W., Huang Y.
Apolipoprotein E4 Domain Interaction Occurs in Living Neuronal Cells as Determined by Fluorescence Resonance Energy Transfer. *J. Biol. Chem.*, 279, 25511–25516 (2004)

Xu X., Meier-Schellersheim M., Jiao X., Nelson L.E., Jin T.
Quantitative Imaging of Single Live Cells Reveals Spatiotemporal Dynamics of Multistep Signaling Events of Chemoattractant Gradient Sensing in *Dic-tyostelium*. *Mol. Biol. Cell*, 16, 676–688 (2005)

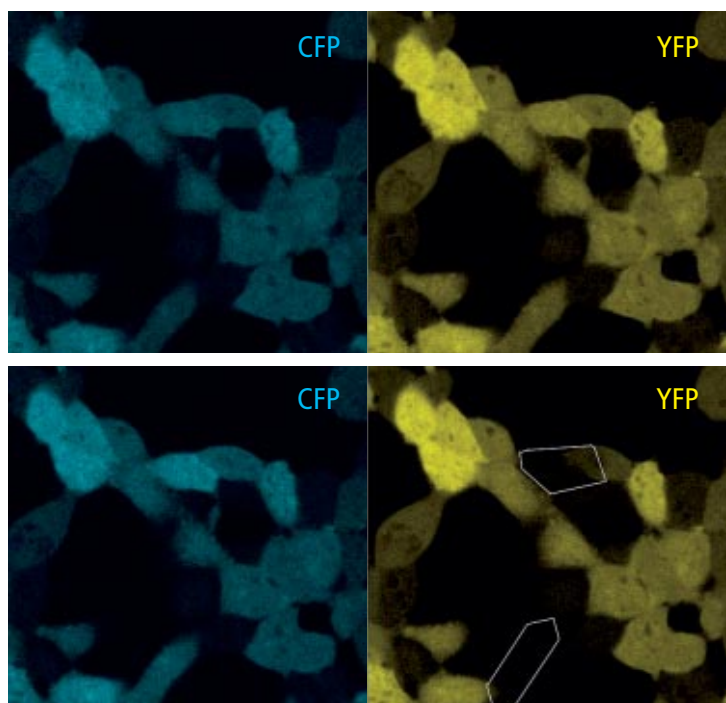


Fig.: FRET analysis of CFP and YFP in cultivated cells, controlled bleaching of the acceptor and increased donor signal.

LSM 5 Family

LSM 5 PASCAL

Laser Scanning Microscope
Dynamic Tracking of Cellular Processes

LSM 510

Laser Scanning Microscope
Cellular Dynamics Optimally Detected

LSM 510 META

Laser Scanning Microscope
Fluorescence Signals Reliably Separated

LSM 510 NLO and LSM 510 META NLO

Multiphoton Laser Scanning Microscopes
Deep Insights Carefully Gained

ConfoCor 3

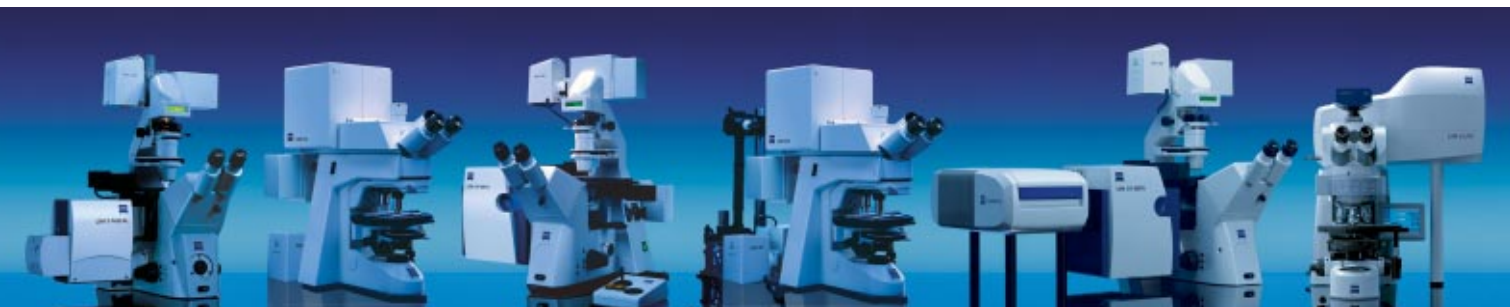
Detection Module for Fluorescence Fluctuation Analysis
Focusing on Single Molecules

LSM 5 LIVE

Laser Scanning Microscope
Vision Set in Motion

LSM 5 DUO and LSM DuoScan

Laser Scanning Microscope Workstations
Localise, Manipulate, Visualize and Analyze



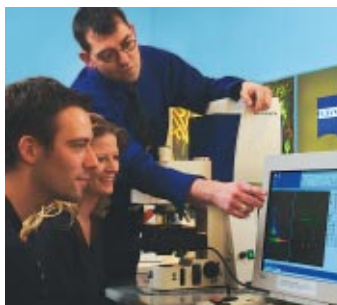
Courses

Please note also our Courses for
Laser Scanning Microscopy and Related Techniques:

- **Laser Scanning Microscopy in Biomedical Applications**
- **Multifluorescence Imaging and Quantitative Colocalization**
- **Dynamic Live Cell Studies – FRAP, FLIP, FRET, Photoactivation and Photoconversion**
- **Confocal Laser Scanning Microscopy in Materials Research & Quality Inspection – Fundamentals & Applications**
- **Fluorescence Correlation Spectroscopy in Biomedical Research**

Morning seminars will give you the theoretical background or directly address biomedical research approaches. They are followed by intensive hands-on training in small groups. You will have access to various combinations of microscopes, lasers and scanheads of the latest generation of our LSM systems. Thus, in our course we guarantee maximum efficiency during theoretical and practical learning with the most modern systems.

Visit us at www.zeiss.de/courses to find the next date for the course of your choice.





Carl Zeiss Microlmaging GmbH

07740 Jena, Germany

Phone: +49 3641 64 3400

Fax: +49 3641 64 3144

E-Mail: micro@zeiss.de

www.zeiss.de/lsm