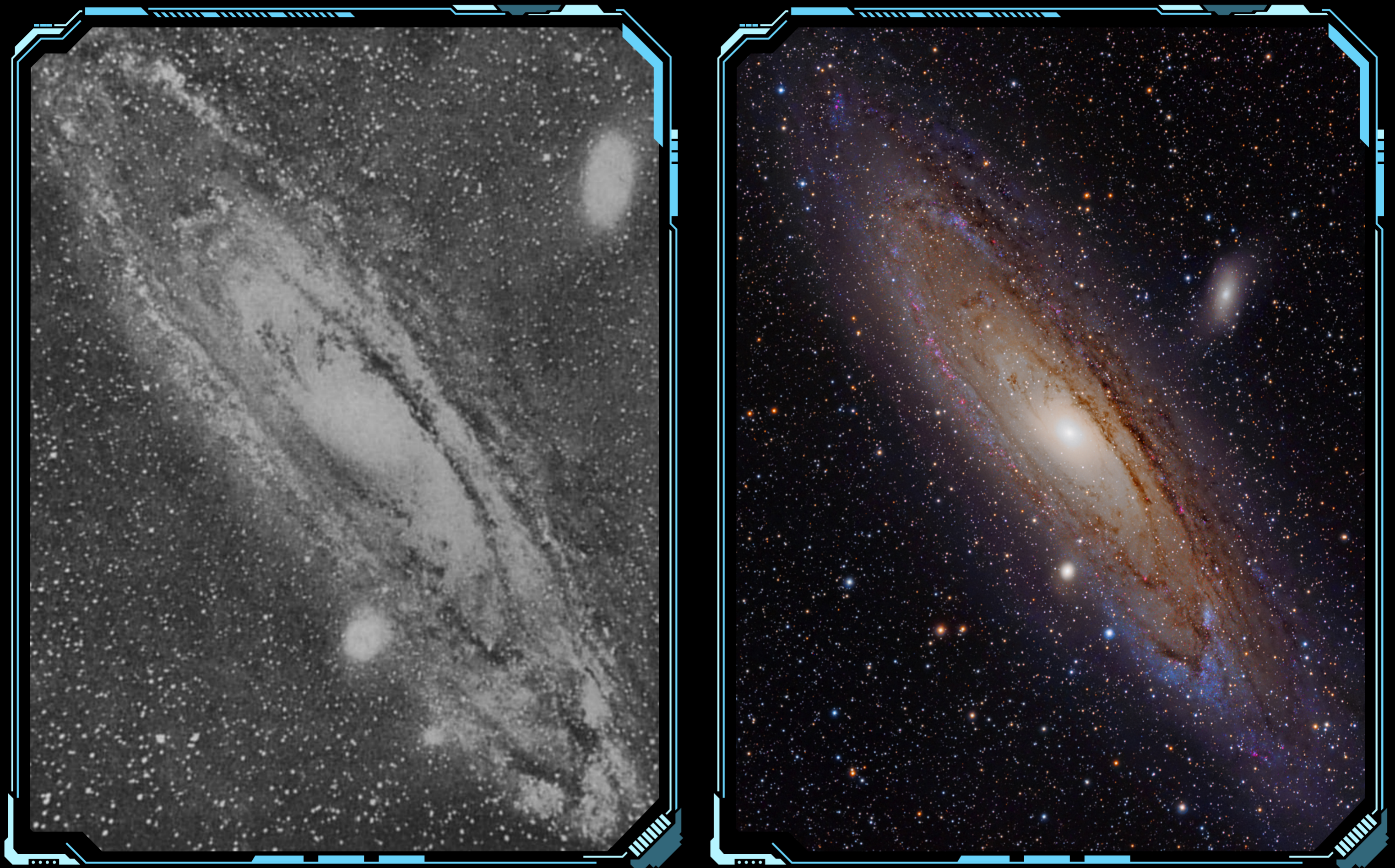


Capturing the Cosmos



The great nebula in the constellation Andromeda, photographed in 1902 (Yerkes Observatory) and today (Adam Evans).

At the time the first planetarium was developed, mankind's knowledge of the universe expanded dramatically. Large telescopes revealed many new details. Astronomers debated about the distance of the nebula-like objects in the sky. Are they part of our Milky Way or much farther away? When Edwin

Hubble was finally able to measure the distances, it became clear that the universe is many times larger than previously assumed. Planetariums were just able to simulate the starry sky when they already had to think about additional types of presentations.

